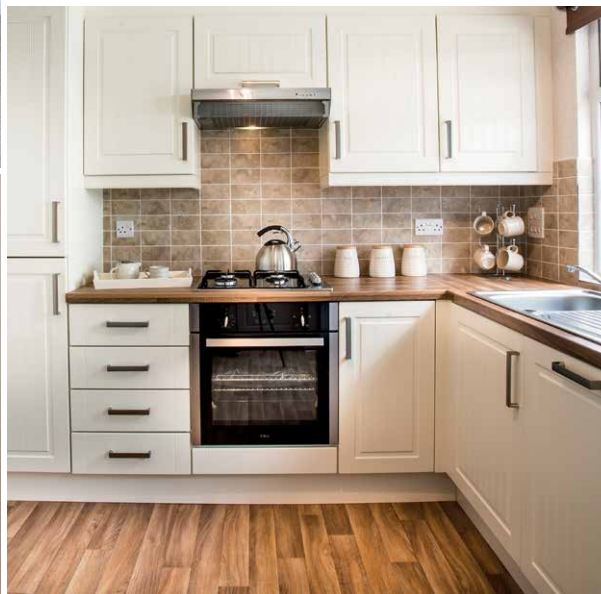


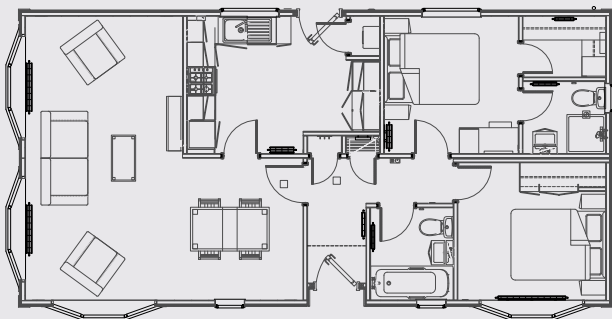
Sonata II





FLOORPLAN:

Park homes are available up to 65' x 22' in either 1, 2, 3 bedroom options.



As part of our ongoing development, we reserve the right to change or alter specifications without prior notice. Photographs may show features which are not standard E&OE.

KEY FEATURES:

- Dormer above entrance
- Four Georgian style bay windows
- Colour co-ordinated sofa, curtains and carpets
- Fully fitted kitchen and bedroom furniture with walk in wardrobe & en-suite
- Four burner gas hob, built under oven, microwave, dishwasher, fridge/freezer and dual washer/dryer
- Dining table including four chairs, and coffee table
- Energy efficient A Rated boiler
- Built to British Standard 3632 and protected by a 10 year Platinum Seal structural warranty

MORE INFORMATION:

Visit the UK's largest permanent showground to view a selection of residential park homes and holiday lodges.

Open 6 days a week Monday - Saturday
9am - 5pm (excluding bank holidays)
or call our friendly sales team on:

0845 0702345 or email sales@phplh.com
www.prestigeandhomeseeker.com

